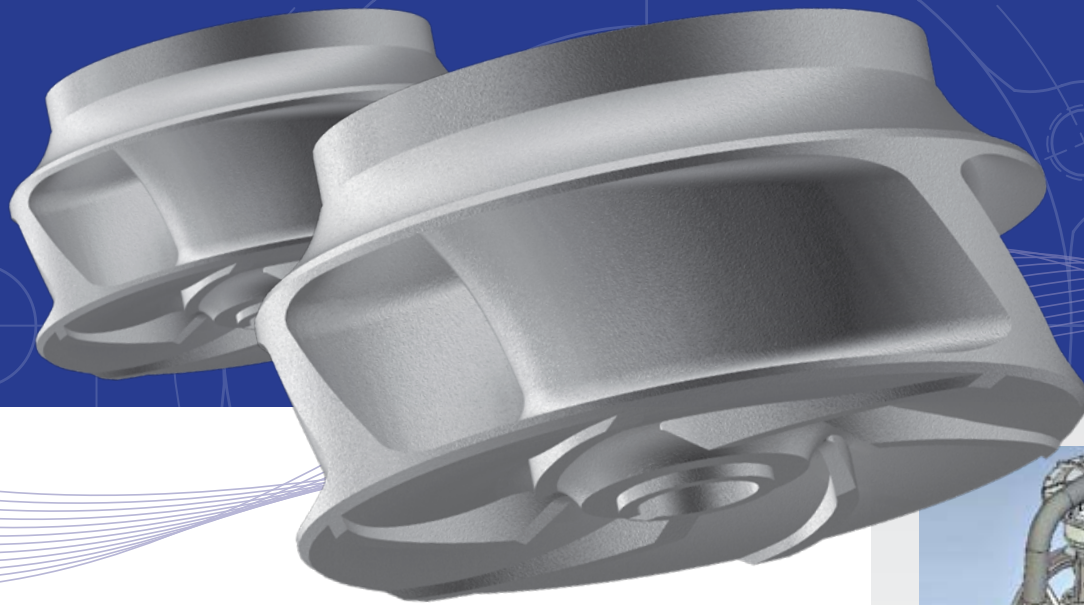




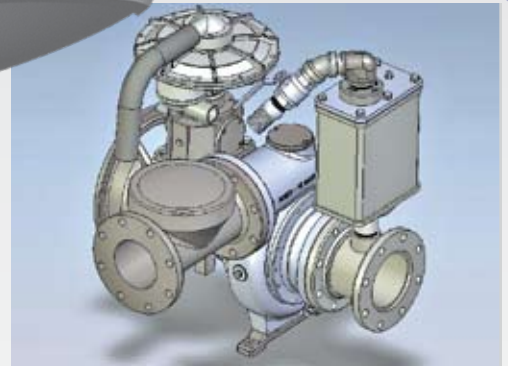
New Zealand distributor for Pioneer Pumps





*The day you need to move 1,000,000 gallons of water in a couple hours is not the day to be figuring out how to do it. You found that solution when you chose a Pioneer Pump. Every pump in our extensive line is advanced engineered to move water faster, more efficiently and with less downtime, whatever the application. **Guaranteed.***

This is Pioneer Pump. This is Performance Through Innovation.



Engineering Leadership

Pioneer Pump's innovation begins with our engineering team. Using the latest computer technology, we design our pumps to deliver outstanding hydraulic performance for both solids handling and clear liquid applications. Our large impeller eye areas provide higher suction lifts, lower NPSHr and more stable operation. No other company designs and builds centrifugal pumps capable of our extreme flows and pressures.

*With people and pumps around the world, you can count on us. Wherever you are. Whatever you need. Whenever you need it. From our engineers to our sales support staff to our global distribution network, **Pioneer Pump is ready.***



Rugged Construction

From the Arctic to the equator, from oil exploration to corrosive waste, Pioneer pumps are built to survive — and thrive — in the most demanding applications. Robust ductile iron (or special metal) construction combined with oversized bearings and shafts provide unparalleled reliability. In industries and climates where the cost of downtime is highest, confident customers count on Pioneer Pump.



Green by Design

With stricter environmental regulations, pumps have to be safer, cleaner and more efficient than ever. All of our pumps utilize the latest engineering techniques to provide high-volume efficiency and low energy consumption. Unlike our competitors, our patented PosiValve™ priming valve prevents spillage and carryover of the product. Compare our pumps to others on gallons pumped and energy consumed. You'll see why we're the greenest choice.



Smart Designs

Our modular design allows us to fulfill your needs with the right pump for multiple applications while minimizing spare parts. Mounting multiple pump ends on standardized heavy-duty bearing housings enables us to build and ship quickly. Our trailer packages are designed so you can convert to stationary skid with just a few turns of the wrench. Our versatility gives us the confidence to say “yes” to your needs while saving you money.



5



4



3

9.50±.04

Reduce overhead costs.

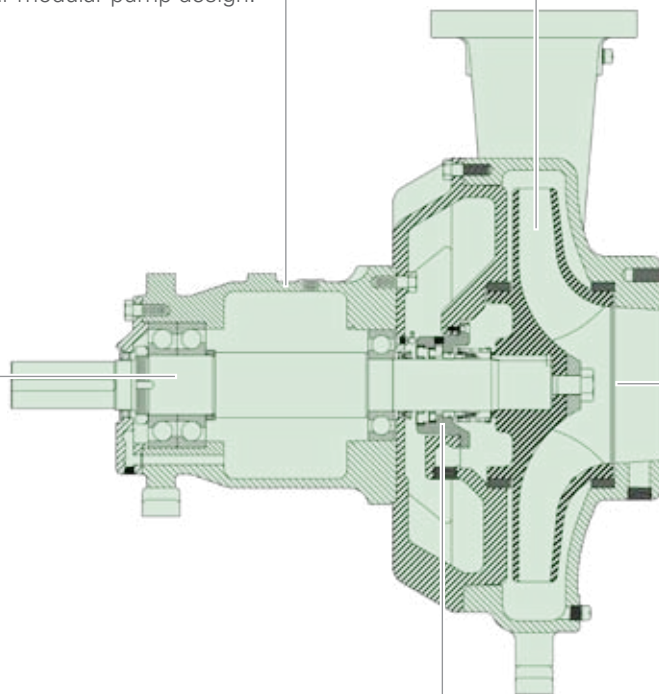
Minimize on-hand parts inventory with our modular pump design.

Minimize maintenance costs.

Keep the pump running optimally with replaceable wear rings, oversized bearings and shafts. The pump is protected by standard chromed shafts with lip seals or non-contacting bearing isolators that reduce energy consumption.

Reduce operating costs.

Our industry-leading, high-performance impeller design provides more flow with less horsepower for lower operating costs.



Experience superior performance.

Lower NPSHr and improved vapor handling are the result of a large impeller eye area.

Be environmentally responsible.

Standard tungsten vs. silicon carbide mechanical seal prevents pump leakage with run-dry option.

Performance. Reliability. Durability. Get it all in a Pioneer Pump.
Contact us today at **503.266.4115** or visit **www.pioneerpump.com**



5

4

3

9.50±.04

Minimize maintenance costs.

Keep the pump running optimally with replaceable wear rings, oversized shafts and bearings.

Enjoy quiet operation.

Sound-attenuated packages available.

Use less energy.

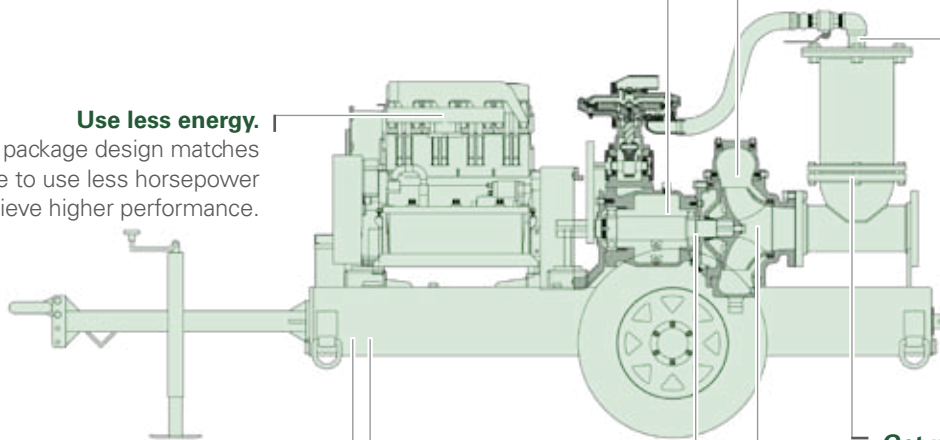
Optimized package design matches pump with engine to use less horsepower and achieve higher performance.

Lower operating costs.

More flow with less horsepower means reduced operating costs with our industry-leading, high-performance impeller design.

Eliminate environmental concerns due to product spillage.

Our PosiValve stainless steel priming valve is specifically designed to eliminate product carryover.



Get a rental-ready package.

Robust skid with large integral fuel tank allows for extended run time.

Prime from dry for unattended operation.

Standard indefinite run-dry tungsten vs. silicon carbide mechanical seal with large oil reservoir.

Get rapid priming and repriming.

Our UltraPrime priming system provides 50 CFM liquid-tolerant, diaphragm vacuum pump for faster priming and higher air-handling capability.

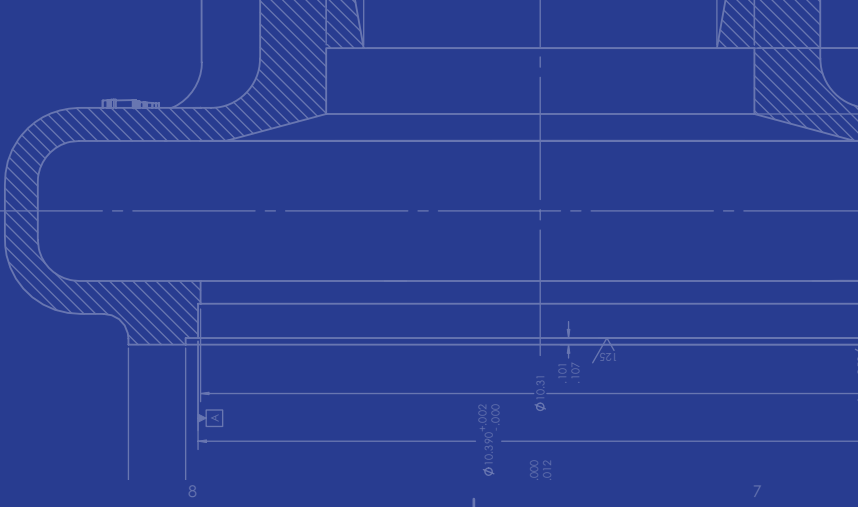
Increase flexibility.

Modular pumpset designs make it fast and easy to convert from trailer to skid.

Achieve better performance.

Large impeller eye areas with lower NPSHr characteristics allow for higher suction lift capability.

Performance. Reliability. Durability. Get it all in a Pioneer Pump.
Contact us today at **503.266.4115** or visit **www.pioneerpump.com**



Self-Priming

DESCRIPTION

Wet-prime, self-priming centrifugal pumps

PERFORMANCE

Size: 1.5" – 10"
40–250mm

Flow: 20–3,500 GPM
4–795m³/hr

Head: 200+ feet, 60m

AVAILABLE CONFIGURATIONS

- Base-mounted electric-driven
- Engine-driven SAE-mounted
- Engine-driven skid or trailer packages
- Horizontal or vertical V-belt driven
- Sound-attenuated skid or trailer packages

INDUSTRIES

- Sewage
- Construction
- Industrial
- Municipal
- Agricultural
- Food Processing
- Mining
- Industrial waste
- Petrochemical
- Dewatering
- Paper mills
- Oil field

Pioneer self-priming series pumps are designed for reliable solids and clear liquids pumping. After initial priming they continue to reprime automatically. The next-generation Elite Series offers superior performance, increased reliability and additional maintenance features. Both series are available in a variety of different materials.





5

4

3

9.50±.04

Rely on the best materials.

Standard heavy-wall ductile iron volute for durability and peace of mind.

ELITE SERIES EXCLUSIVE: Improve your seal life.

An optional external mechanical seal flush is available for improved seal life.

ELITE SERIES EXCLUSIVE: See oil levels easily.

Two sight glasses make it easy to see the bearing and seal oil levels.

Enjoy reduced downtime and ease of maintenance.

Back pull-out removable rotating assembly gives you direct access to all rotating components without disturbing the pump or piping.

Worry about something other than the pump.

17-4 PH stainless steel shaft is corrosion-resistant, easy to maintain and highly reliable.

ELITE SERIES EXCLUSIVE: Protect the bearings.

Rotating assembly utilizes a double lip seal with atmospheric drain for additional bearing protection.

Get peak performance.

The simple external shimless impeller adjustment means that the user can easily adjust the tolerance between the impeller and wearplate.

One pump. Lots of applications.

Viton® O-rings allow for use in a wide range of applications.

ELITE SERIES EXCLUSIVE: Make easy adjustments for longer impeller life.

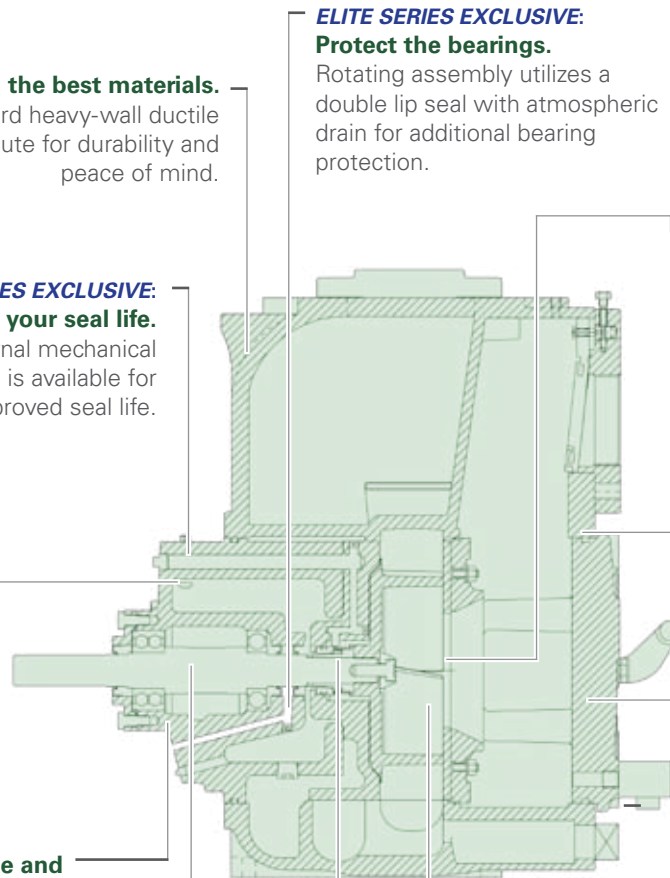
Simple, external, shimless impeller adjustment from the rotating assembly or cover plate allows for adjusting the tolerances for increased wear life.

Keep trash moving.

Semi-open trash handling ductile iron impeller.

Trust our seals.

Cartridge type tungsten vs. silicon carbide mechanical seal for ease of maintenance and simple installation.



Performance. Reliability. Durability. Get it all in a Pioneer Pump.
Contact us today at **503.266.4115** or visit **www.pioneerpump.com**



Hydraulic Submersible

DESCRIPTION

Heavy-duty hydraulic submersible pumps and power units

PERFORMANCE

Size: 1.5" – 18"
40–450mm

Flow: 20–18,000 GPM
4–4,000m³/hr

Head: 700+ feet, 210m

AVAILABLE CONFIGURATIONS

- Bearing frame-mounted
- Engine-driven skid or trailer packages
- Electric-driven packages
- Sound-attenuated skid or trailer packages

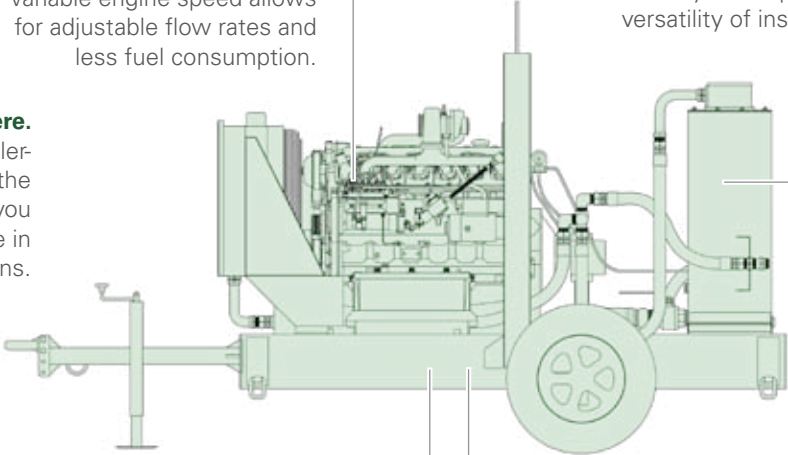
INDUSTRIES

- Construction
- Industrial
- Municipal
- Agricultural
- Mining
- Industrial waste
- Sewage
- Dewatering
- Sludge transfer
- Paper mills
- Oil field
- Manure slurry

Ideal for dewatering, construction and mining applications, Pioneer hydraulic submersible pumps and power units offer solids handling and clear liquid service. Pumps are available in a variety of different metallurgies.



Hydraulic Power Unit



Reduce operating costs.
Variable engine speed allows for adjustable flow rates and less fuel consumption.

Use it anywhere.
Engine-driven skid or trailer-mounted packages take the power units anywhere you need them. Also available in electric-driven configurations.

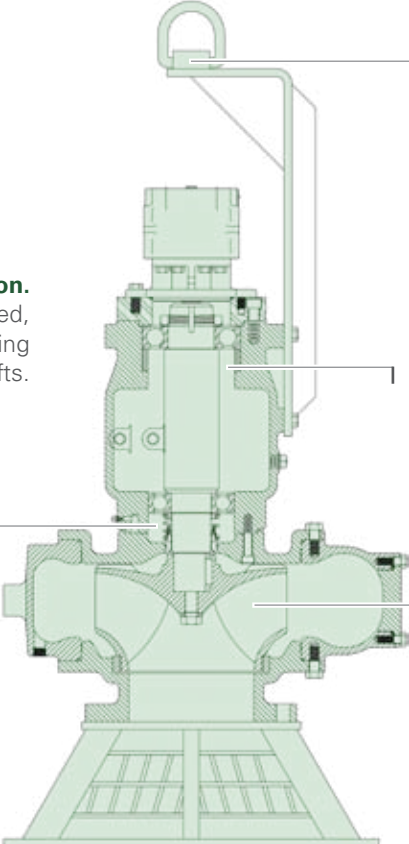
Enjoy location flexibility.
Power unit can be located away from hydraulic pump, allowing for versatility of installation.

Be eco-friendly.
Can be operated with biodegradable or vegetable oils.

Get a rental-ready package.
Robust skid with large integral fuel tank allows for extended run time.

Get package flexibility.
Modular trailer design with bolt-on components. Same package can be used in skid or trailer configuration.

Hydraulic Pump



Install it easily.
Light-weight and compact for ease of installation.

Enjoy ease of operation.
Pump is submerged, thereby eliminating priming or suction lifts.

Be environmentally responsible.
Heavy-duty, low-pressure, oil-lubricated bearing block with tungsten vs. silicon carbide mechanical seal to prevent pump leakage.

Set it and forget it.
Indefinite run-dry capability without damage to the pump.

Use one pump for many applications.
Designed for heavy sludge, sewage, trash, and clear liquid applications.

Performance. Reliability. Durability. Get it all in a Pioneer Pump.
Contact us today at **503.266.4115** or visit **www.pioneerpump.com**